



22000 Industrial Blvd, Rogers, MN 55374
866-527-7637
www.motoalliance.com

DENALI Plow Mount MA11705 Polaris RZR Turbo S

Thank you for purchasing a DENALI plow mount. You now own a premium, custom plow mount to allow you to use your plow with your UTV/SxS. Please note the following instructions and heed all warnings.

- Your UTV/SxS and plow system can cause death or injury. Please use caution and common sense when operating your unit.
- Read your Plow Operator Manual, your Winch Operator Manual, and all warning labels before operating your UTV/SxS.
- Operate your UTV/SxS at a walking speed with the blade installed. Do not exceed 5 mph (8 km/h) even with the blade up.
- Do not operate the UTV/SxS on slopes greater than 10 degrees with the plow installed.
- Always lower the plow to the down position before leaving your UTV/SxS unattended.

SEVERE INJURY OR DEATH MAY RESULT IF YOU ARE NEGLIGENT.

**DENALI Polaris RZR Turbo S
MA11705**



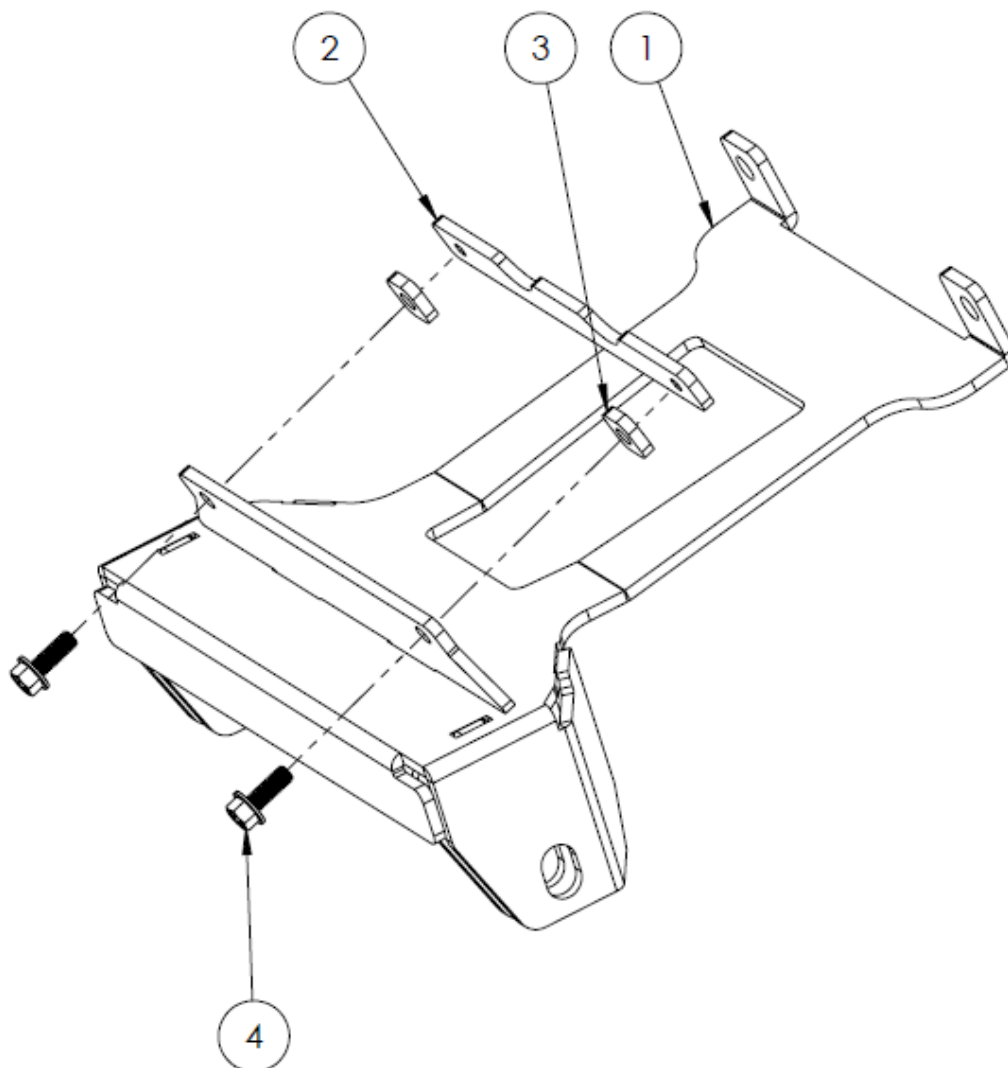
motoalliance

22000 Industrial Blvd
Rogers, MN 55374
866.527.7637

Kit Contents:

Please verify that all hardware and parts are included in your package.

Item Number	Description	Quantity
1	MA11705-W1 Main Mount Plate	1
2	MA11705-4 Front Mounting Strap	1
3	MA11705-5 Front Spacer	2
4	3/8"-16 x 1" Serrated Flange Bolt	2



Installation Instructions

1. Remove the two screws that secure the plastic winch cover plate on the front of the machine as shown in Figure 1.

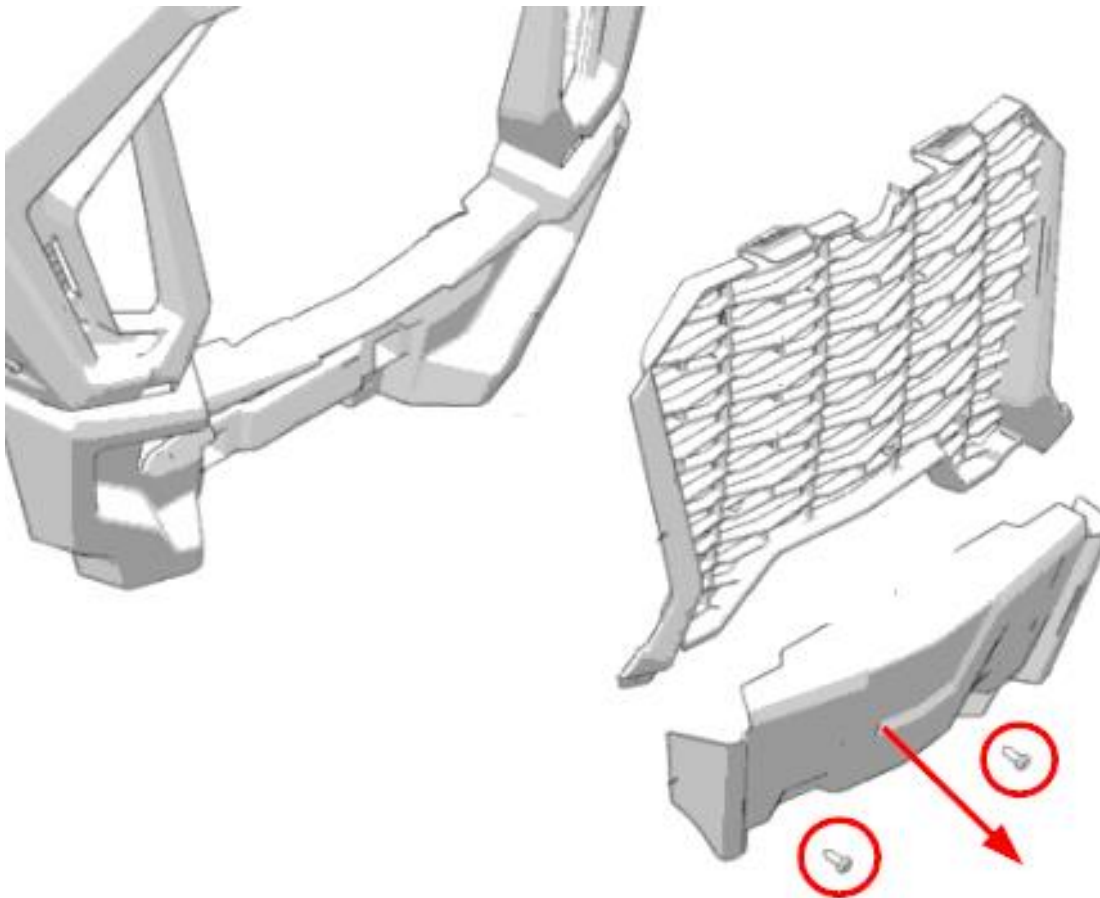


Figure 1

2. Remove the two bolts securing the tow hook as shown in Figure 2.

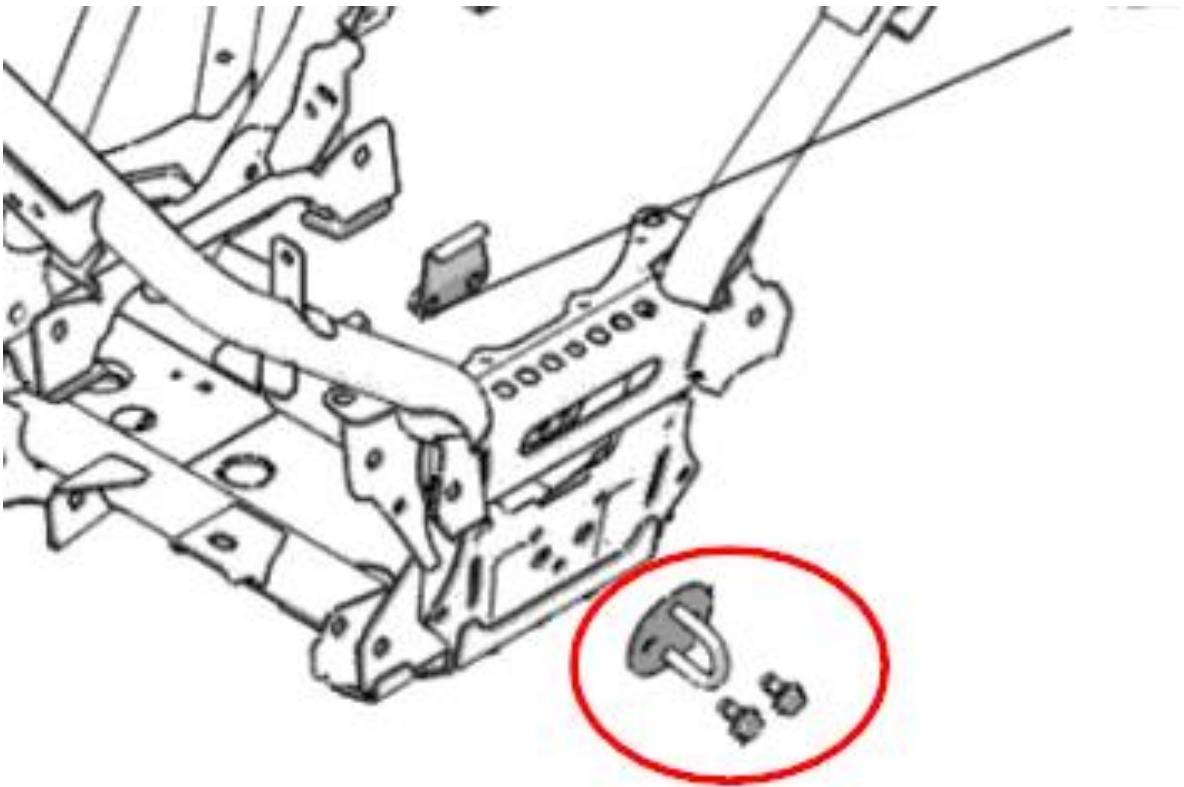


Figure 2

3. Remove the two rear lower control arm mounting bolts. and set hardware aside for future use, as shown in Figure 4.

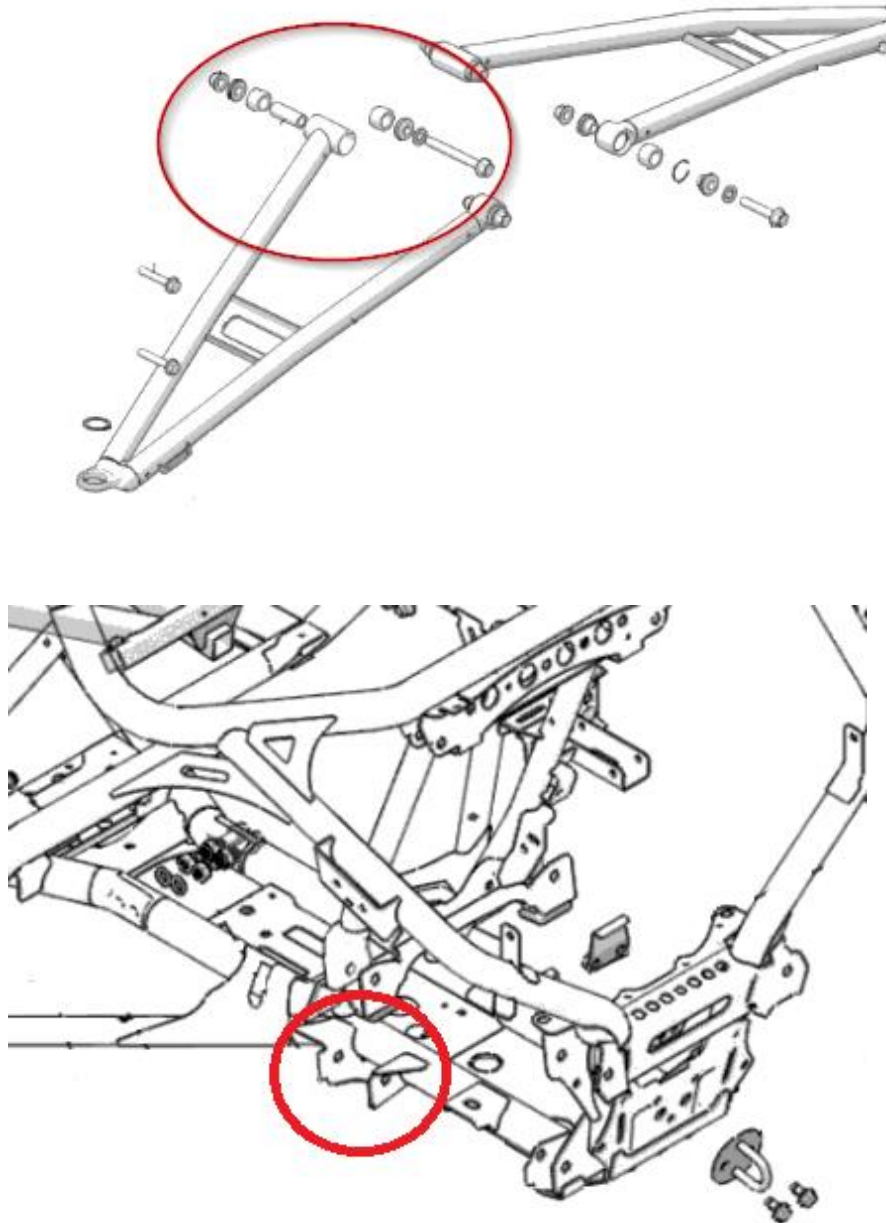


Figure 4

4. Slide the MA11705-4 Front Mounting Strap into place as shown in Figure 5



Figure 5

5. Lift MA1705-W1 into place, aligning the front holes with the holes in MA11705-4.
6. Position the MA11705-5 Front Spacers between the Main Weldment and the Front Mounting Strap so the holes align and use the provided 3/8" bolts to loosely secure the brackets together. Do not tighten at this time.



Figure 6

7. Reinstall the Lower Control Arm bolts removed earlier through the rear plow mount holes. Torque the control arm bolts to 42 ft-lbs.
8. Verify the plow is sitting flush with the vehicle frame and tighten down all hardware.
9. Use the pins supplied with your DENALI Plow System to attach the plow to the mount.
10. Retighten all hardware after the first use, continue to retighten hardware seasonally.